

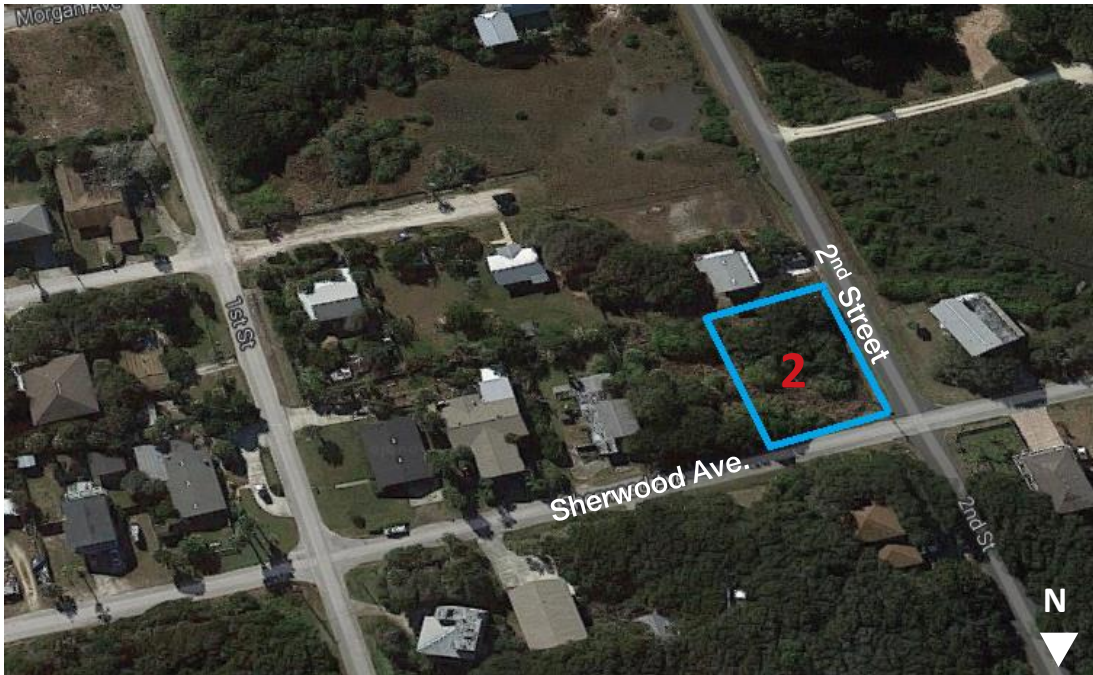
FOR SALE



St. Johns County

3008 2nd Street, LOT 2

St. Augustine, FL 32084



PROPERTY HIGHLIGHTS

CITY: St. Augustine (Vilano Beach)

COUNTY: St. Johns

TAX DISTRICT: St. Johns County

ACRES: Approximately 0.22 +/-

FRONTAGE: Approximately 77' along Sherwood Ave.

DEPTH: Approximately 122' along 2nd Street

MINIMUM BID: ~~\$90,000~~ \$75,000

PARCEL ID: Portion of 1469800000

ZONING: RS-3 (Residential Single Family)

FUTURE LAND USE: Residential - C

FLOOD ZONE: AE

UTILITIES: North Beach Utilities

0.22+/- Acres

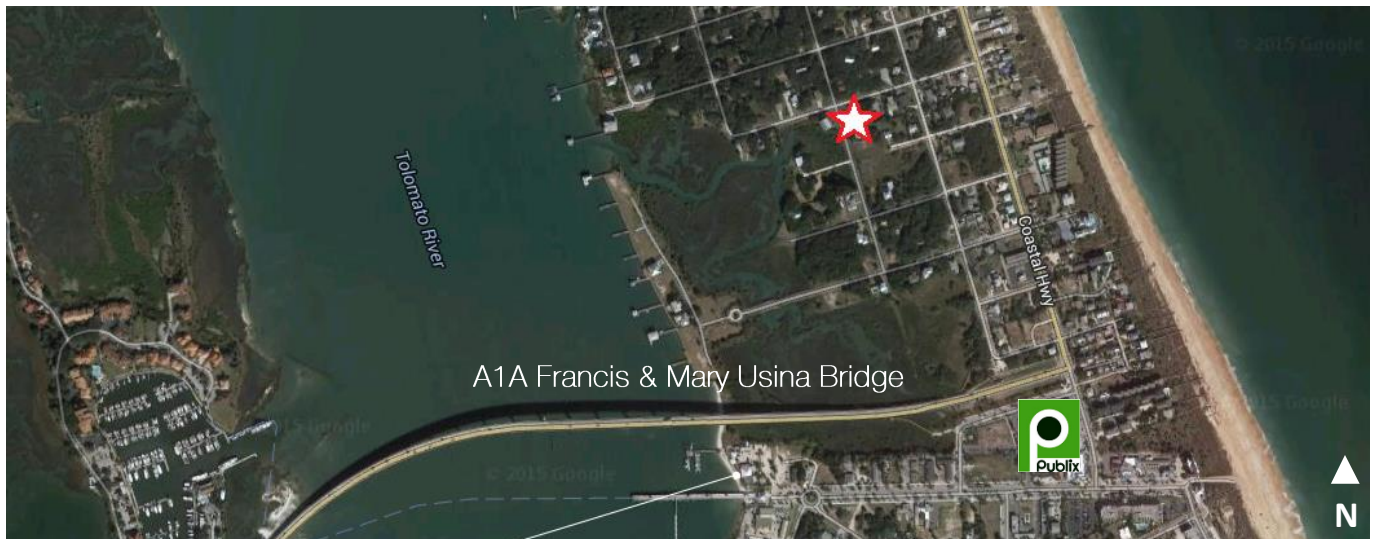


St. Johns County

3008 2nd Street, Lot 2

St. Augustine, FL 32084

Property Overview



PROPERTY DESCRIPTION

The subject property is a vacant lot totaling approximately 0.22+/- acres. The site is nestled within the Vilano Beach Community of St. Augustine, Florida in St. Johns County with the Tolomato River to the west and Atlantic Ocean to the east. Positioned along Sherwood Avenue, the site has approximately 77 feet of frontage and approximately 122 feet of depth along 2nd Street and is a prime site for development.

AREA INFORMATION

Vilano Beach is located two miles from the City of St. Augustine, Florida and lies between the Atlantic Ocean and the Tolomato River. There are 5 oceanfront parks, a number of public beach access points and a fishing pier. In 2008, the Vilano Beach Town Center was completed which included a Publix Supermarket, restaurants, water taxi to Old St. Augustine, and a marina with a full dock.

PRICING

The subject property is being sold “as is”, “where is”. Bids will be accepted until **12:00 NOON EST, THURSDAY, DECEMBER 10, 2015**. The Florida Department of Environmental Protection or Savills Studley Occupier Services are not responsible for bids mailed but not received by **12:00 NOON EST, THURSDAY, DECEMBER 10, 2015**. All bids received by the bid submission deadline will be publicly opened at **1:00 PM EST, THURSDAY, DECEMBER 10, 2015**

The minimum acceptable bid is **\$75,000 for LOT 2**. Any bids less than the minimum bid amount will be considered counterproposals and will be deemed non-responsive and rejected. The bid shall be accompanied by an earnest money deposit in the amount of 10% of the bidder’s bid amount.

0.22+/- Acres

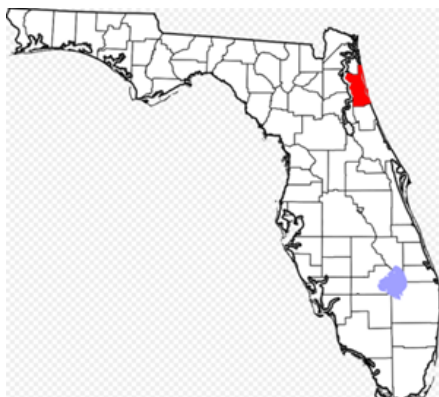
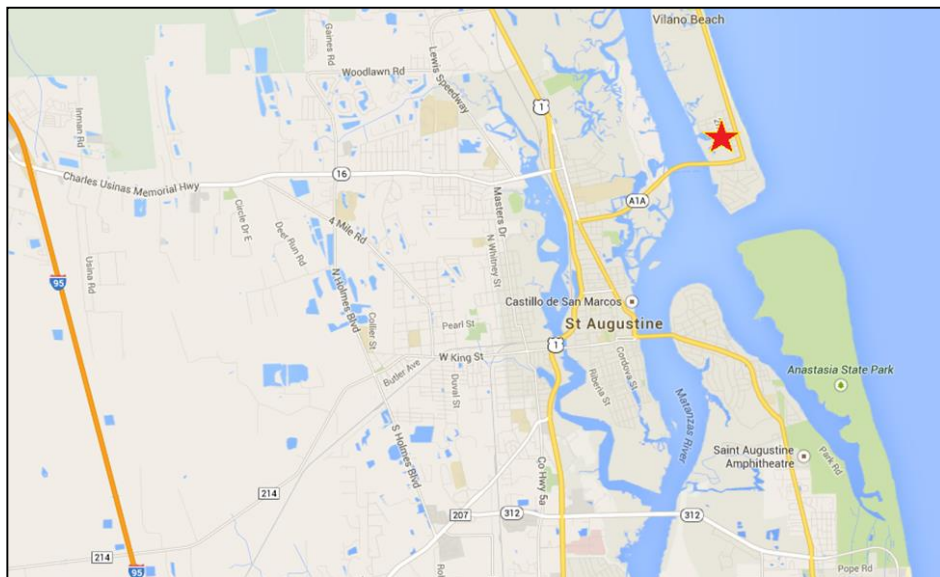
St. Johns County

3008 2nd Street, Lot 2

St. Augustine, FL 32084



Property Location



0.22+/- Acres



St. Johns County

3008 2nd Street, Lot 2

St. Augustine, FL 32084

Property Photos



FOR MORE INFORMATION PLEASE CONTACT:

RANDALL C. MILLS / 727.421.8789 / rcmills@savills-studley.com / www.myfloridalands.com

DISCLAIMER: All information contained on this website/brochure has been compiled from a variety of sources and, as such, is for general informational purposes only and subject to change without notice. Neither the Florida Department of Environmental Protection (Department) nor the Board of Trustees of the Internal Improvement Trust Fund (Board) makes any representation or warranties of any kind, express or implied, with respects to the content, quality, completeness, accuracy, or reliability of any information contained on this website/brochure or through links to other websites. Neither the Department nor Board assumes any legal liability for the content quality, accuracy or completeness of the information. Any reliance you place on this information is therefore strictly at your own risk. In no event will the Department or Board be liable for any loss or damages, whether direct, indirect, general, consequential, incidental, exemplary or special, arising from your use of the information provided in this brochure or on this website or links to any other websites. Interested parties are advised to seek professional assistance or advice prior to submitting a bid form or entering into a sales contract. The acreage used in this brochure/website is estimated and not based on a survey. The purchase price of a surplus property will not be reduced regardless of any difference between the estimated acreage and the acreage determined by a survey or other means. 6/22/2015